

3780p



12 Million
inhabitants



40%
R&D
expenditure

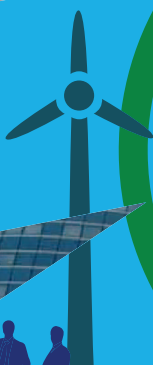


37%
R&D
workforce



663,000
students

17 Universities
70 Grandes Ecoles,
business and
engineering schools



EXPORT

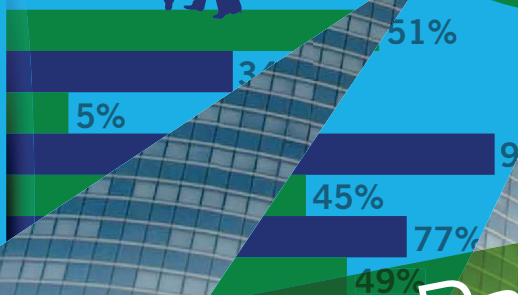
2500

43%

40%

INNOVATION

EMPLOYMENT



Paris Region Key Figures 2017



PARIS
REGION

Paris, the Banks of the River Seine
© Paris Tourist Office / Sarah Sergent



Versailles - The gardens
© Christine Tarquis



Genopole (Essonne)
© Genopole / A. Da Silva



Rungis © A. Potignon /
CCI Paris Ile-de-France



Transport RER, Bridge of
the Seine River, Rueil Malmaison
© CRT Paris Ile-de-France /
Jarry Tripelon



Pilot children's space
© Musée de l'Air et de l'Espace /
Alexandre Fernandes



International Paris Air Show
© David Delaporte / CCI Paris Ile-de-
France



INSEAD Business School
© Tendance Floue / Pascal Aimar



WELCOME TO PARIS REGION, HOME OF BUSINESS OPPORTUNITIES

Paris Region Key Figures 2017 lays out a panorama of the region's economic dynamism and social life, positioning it among the leading regions in Europe and worldwide.

With its fundamental indicators, the brochure "Paris Region Key Figures 2017" is a tool for decision and action in favor of enterprises and economic stakeholders. It is useful to economic and political leaders of the region and to all those who want to have a global vision of the dynamic regional economy.

Paris Region Key Figures 2017 is a collaborative publication produced by Paris Region Entreprises, the Paris Île-de-France Regional Chamber of Commerce and Industry and the Paris Region Urban Planning and Development Agency (IAU Île-de-France).





5

WELCOME TO PARIS REGION



6

OVERVIEW



8

POPULATION



10

EDUCATION



12

R&D AND INNOVATION



15

ECONOMY AND BUSINESS



20

EMPLOYMENT



22

TRANSPORT AND MOBILITY



24

LOGISTICS



26

REAL ESTATE



28

MEETINGS AND EXHIBITIONS



30

TOURISM AND QUALITY OF LIFE





PARIS REGION, A MAJOR BUSINESS HUB IN EUROPE

Standing at the crossroads of European and worldwide trade, Paris Region is France's leading economic region and one of Europe's foremost business hubs.

Its economy is that of a major urban region structured around the capital city and bearing all the hallmarks of an efficient metropolitan economy, namely: size, a diverse production base and real estate offering, world-class infrastructure, a cosmopolitan and qualified workforce and a wealth of cultural amenities.

Its main assets:

- The highest GDP in the European Union (EU28) in billions of euros: **30.3% of the French nation's GDP** and **4.6% of the EU28's GDP**, ahead of Greater London and Lombardy (Italy).
- Concentration of jobs, corporate headquarters, SMEs/SMIs, technology companies, business start-ups, world-class competitiveness clusters, foreign groups...
- Its **wide range of business sectors**, its deep-rooted industrial tradition, and one of the highest concentrations of activity in the science and technology sectors
- A consumer marketplace of considerable importance: **12 million inhabitants**, **8.3 million visitors** in the Region's main conference and exhibition centers, **47 million tourists**.
- A young, cosmopolitan, and talented population, and a highly qualified workforce: **18.2% of France's population**, **26.5% of students in France** (the largest concentration of students in Europe), and **23.1% of jobs in France**.
- **Internationally renowned for excellence in education, science and technology** (top business, engineering and specialized higher educational institutions, Fields medals, Nobel prizes, innovative companies).
- **World-class infrastructure, to ensure the seamless flow of people, goods, capital and data.**
Europe's second-largest airport: all major European cities are within 2 hours by plane.
Most efficient public transport with a highly developed railway and regional transport network, which will be considerably enhanced by investments undertaken with the Grand Paris development project.
Europe's number one road network.
Number two regional river network in continental Europe, with 70 ports dotted along 500 km of navigable waterways.
An excellent broadband communication network.
- **The largest stock of commercial property in Europe** and attractive and diversified real estate, with new office districts and business parks, as well as the opening of "start-up factories".
- **A rich heritage and a dynamic center for cultural and business events.**
Paris Region, and in particular inner Paris itself: a city of art, history and culture, is **the world's leading tourist region**, highly attractive to international tourists and a leading location in Europe for meetings and business events. With 700,000 m² in exhibition space, **Paris Region leads Europe in available surface for trade exhibitions** and **Paris is ranked N°2 in the world for welcoming visitors and world-class business meetings**.

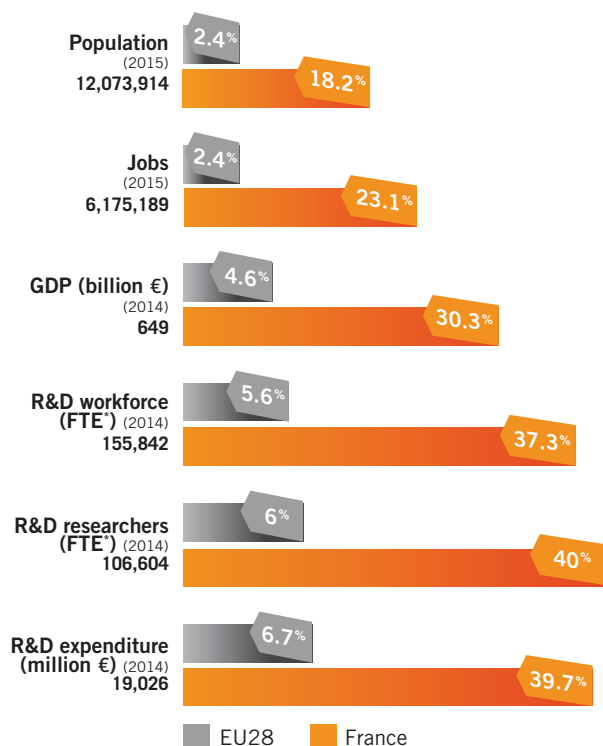


André Citroën Park © CRT Paris Ile-de-France / Jarry-Tripelon



**One of Europe's
leading economic
and innovative
regions**

PARIS REGION vs. FRANCE & EUROPE



* Full Time Equivalent

Source: INSEE, Eurostat, Ministry of Education, Higher Education and Research

PARIS REGION IN THE EUROPEAN UNION AS OF 01.01.2017



AN INTERNATIONAL REGION

1.6 million foreigners (13.1% of the population) (2013)

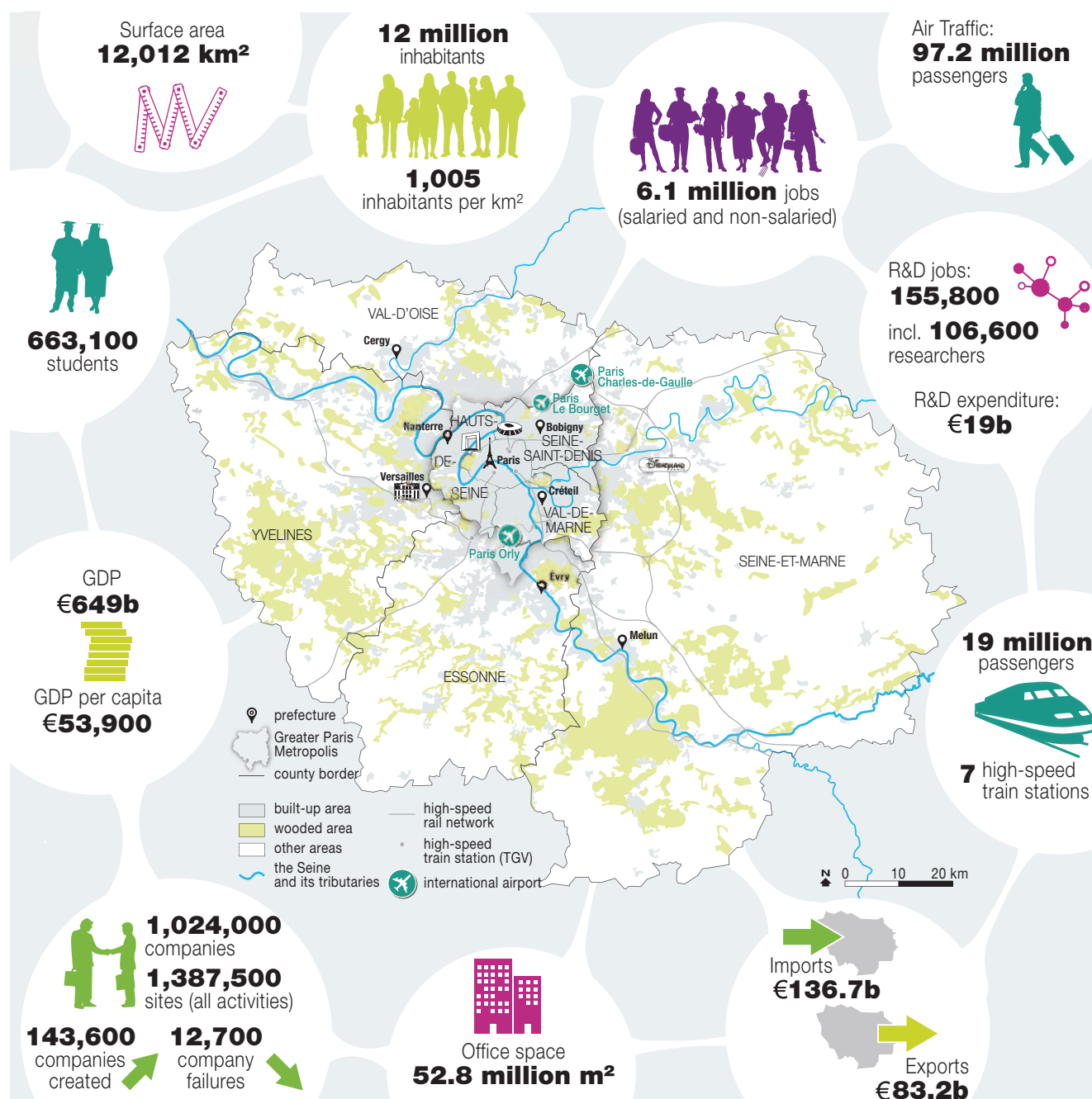
67,000 foreign students in universities (2014-15)

13,000 foreign companies (2010)

340 foreign companies have created or preserved 9,600 jobs in 2015



PARIS REGION ECONOMIC DATA



© IAU idF / sources: French customs, INSEE (National Institute of Statistics and Economic Studies), Ministry of Education, Higher Education and Research, ORIE (Regional Observatory of Commercial Real Estate in the Paris Region), Paris Aéroport, SNCF (National Railways of France)



Atmospheres in Paris Region © Paris Tourist Office / Sarah Sergent



**12 million
inhabitants**



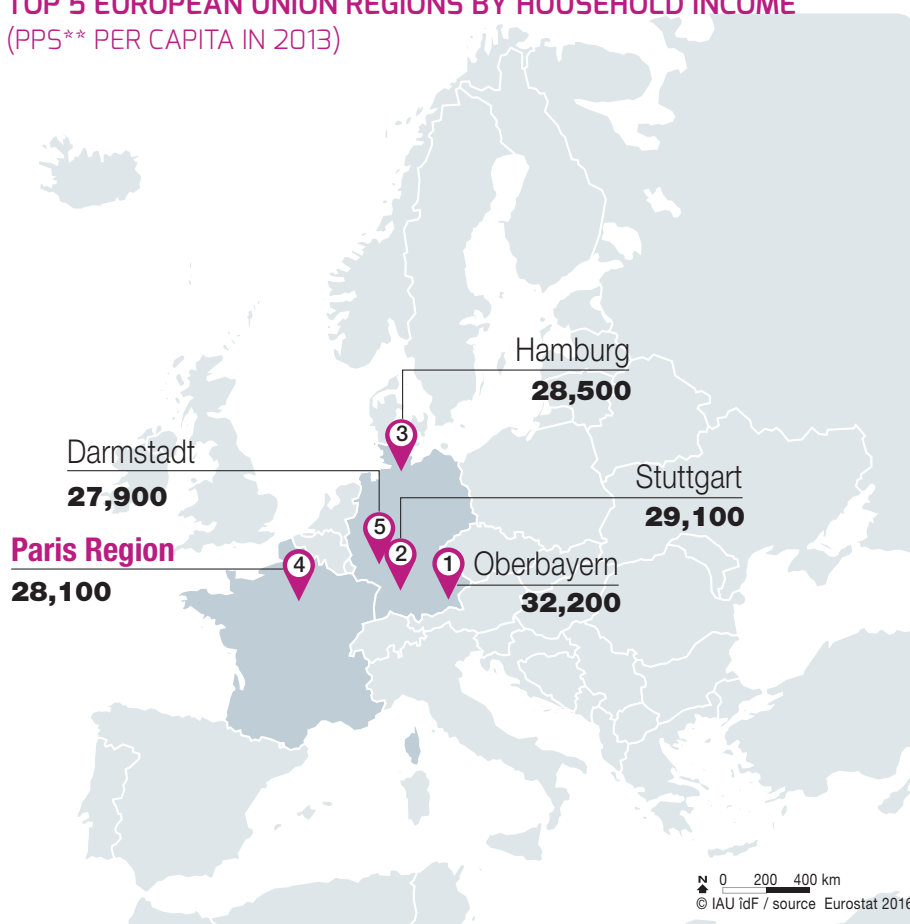
EUROPE'S MOST POPULATED REGION

12 million inhabitants
18.2% of France's population
2.4% of the European Union's population

There are 5 towns in Paris Region with more than **100,000 inhabitants**: Paris, Boulogne-Billancourt, Saint-Denis, Argenteuil and Montreuil (INSEE, Eurostat 12/16, data 2015)

TOP 5 EUROPEAN UNION REGIONS BY HOUSEHOLD INCOME (PPS** PER CAPITA IN 2013)

THE 4TH WEALTHIEST POPULATION IN THE EUROPEAN UNION



* PPS: Purchasing Power Standard



A YOUNG, DYNAMIC POPULATION

179,762 births

74,539 deaths

Birth rate: 15.2‰

(**12.4‰** for France)

Men's life expectancy

80.8 years (France: 79.2)

Women's life expectancy

85.9 years (France: 85.4)

Paris fertility rate:

2.04 children per woman
(Brussels: 1.88, London: 1.73,
Munich: 1.47, Milan: 1.46,
Berlin: 1.46, Barcelona: 1.39)

(INSEE 9/16, Eurostat 11/16, data 2014)

55% OF PARIS REGION'S POPULATION IS UNDER 40

Age	Paris Region		France	
	Total	%/Total Paris Region	Total	%/Total France
0-19	3,133,357	25.95%	16,359,219	24.64%
20-39	3,430,843	28.42%	15,983,034	24.08%
40-59	3,193,560	26.45%	17,758,118	26.75%
60-74	1,507,433	12.49%	10,217,221	15.39%
Over 75	808,721	6.70%	6,063,010	9.13%
	12,073,914	100%	66,380,602	100%

Source: INSEE, 12/16, data 2015



A MULTICULTURAL POPULATION

13.1% of Paris Region's population is foreign, i.e. **1.6 million** people

(INSEE, 1/17, data 2013)

46.2% come from Africa (**726,309**)

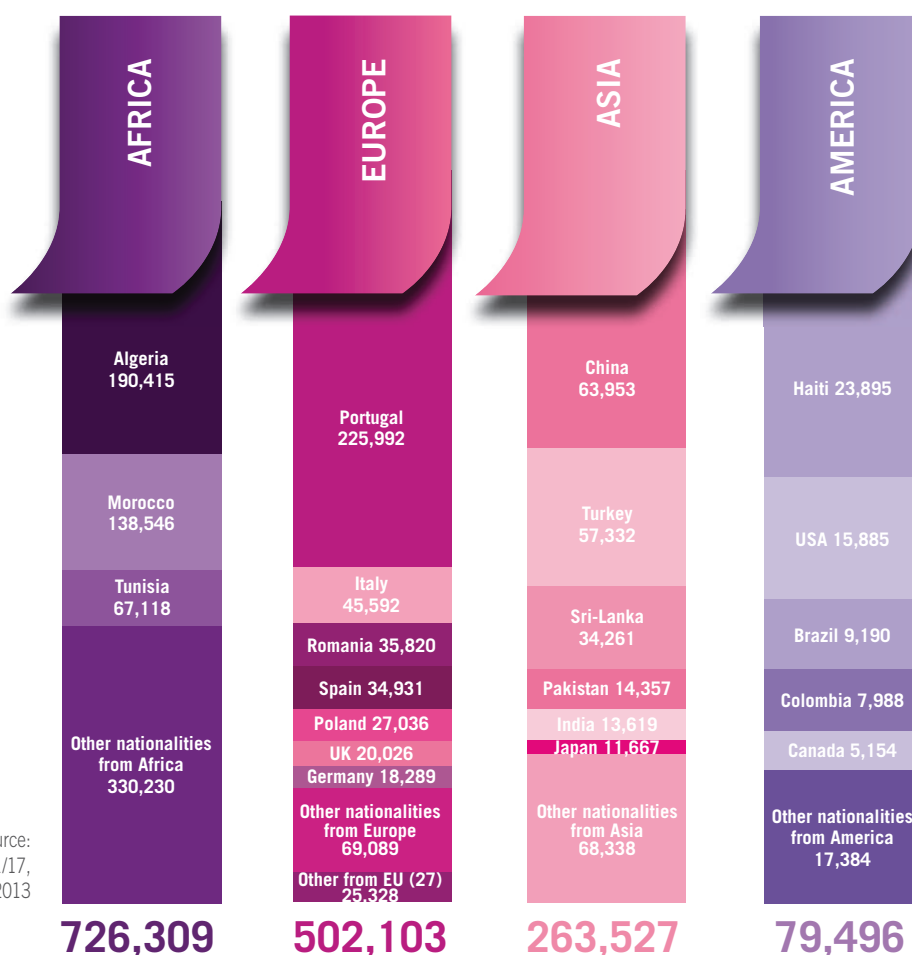
31.9% come from Europe (**502,103**)

16.7% come from Asia (**263,527**)

5.1% come from America (**79,496**)

0.1% come from Oceania (**1,913**)

Source:
INSEE, 1/17,
data 2013





Graduation Ceremony at HEC © HEC



Europe's largest pool of students and PhD candidates



FROM KINDERGARDEN (2-6 YEARS) TO HIGH SCHOOL (15-18 YEARS), an extensive selection of international schools and courses open to foreign and French pupils.

30 international schools
124 international programs
 in 16 different languages leading to the
 "international option" of France's high school
 graduation exam (OIB)
64,000 students in European programs
 (MENESR, data 2015)

British	33	Chinese	11	Japanese	5	Norwegian	3
German	14	Italian	7	Polish	5	Swedish	3
American	12	Arab	6	Danish	3	Brazilian	1
Portuguese	11	Spanish	6	Dutch	3	Russian	1

Source: Eduscol 2016



A HIGHLY-EDUCATED REGION WITH MANY GRADUATES

38.7% of the adult population holds at least a bachelor's degree (2013)

1,319,500 pupils in primary education
1,038,100 students in secondary education
663,000 students (**26.5%** of France's student population)
17 universities
70 "Grandes Ecoles", business and engineering schools

► In university

➔ **377,700 students**

- Bachelor's degree: 213,200
- Master's degree: 144,600
- PhD: 19,900

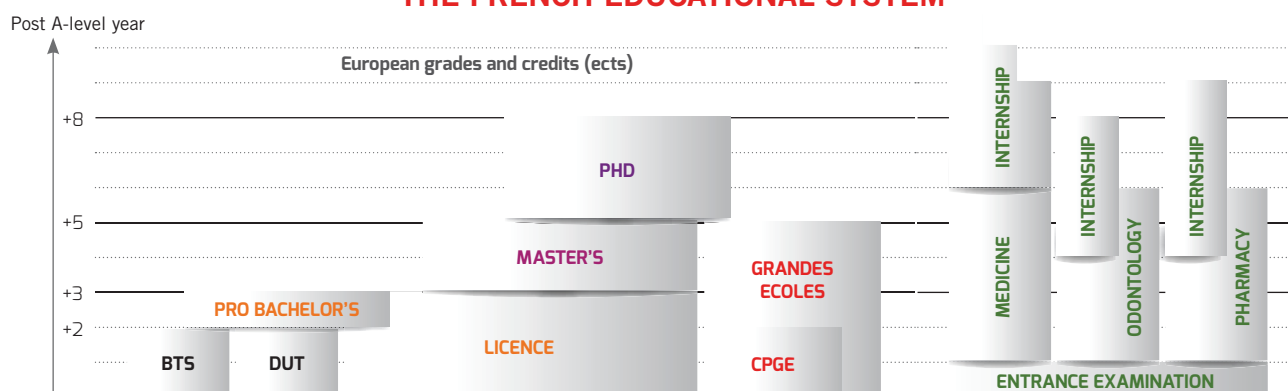
► In other higher education institutions

➔ **288,000 students**

- Advanced technician programs: 45,000
- Business schools: 42,500
- Engineering schools: 36,000
- Preparatory classes for the Grandes Ecoles: 27,300
- Other establishments incl. Grandes Ecoles: 137,700

(Ministry of Education, Higher Education and Research, data 2015-16)

THE FRENCH EDUCATIONAL SYSTEM



Source: MESR (French Ministry of Higher Education and Research)

BTS: Technical programs - DUT: University Diploma of Technology - Grandes Ecoles: Engineering & Business schools - CPGE: class which prepares students to enter the Grandes Ecoles



AN ATTRACTIVE REGION FOR FOREIGN TALENTS

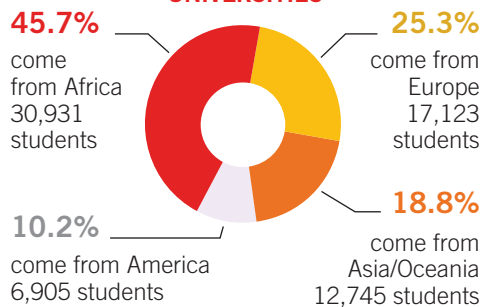
Paris: top world city for studying (QS Best Student Cities, 2016)

In Paris Region,
1 out of **5** university
students is foreign (**18%**)

68,000 foreign
students, i.e. **30.1%** of
all foreign students in
French universities

9,442 foreign PhD
students, i.e. **43.8%** of
PhD students in French
universities

FOREIGN STUDENTS IN PARIS REGION UNIVERSITIES



Source: Ministry of Education, Higher Education and Research, 2015-16

Research and higher education clusters

Stakeholders in higher education and research come together to discuss and to unite their strengths and their differences so as to achieve their shared common goals. There are **11 clusters**: Hesam University, Paris Sciences et Lettres Research University, Sorbonne Paris Cité University, Sorbonne Universities, Paris Est University, Paris Lumières University, Paris Saclay University, Paris Seine University, Campus Condorcet - Paris-Aubervilliers, Cité des humanités et des sciences sociales, Institut Polytechnique Grand Paris, ParisTech.

Breakdown of the university students in Paris Region in 2015-2016, by field of study

Fields of study	Total Higher Education Students	%
Law, Political Science	58,489	15.48
Total Law, Political Science	58,489	15.48
Economics	37,655	9.97
Economic and public administration	7,730	2.05
Total Economics - Administration	45,385	12.02
Letters, Language arts, Art	31,311	8.29
Languages	24,581	6.51
Social and Human sciences	70,199	18.58
Literature, Humanities	2,405	0.64
Total Letters - Art - Languages - Human Sciences	128,496	34.02
Basic and Applied sciences	39,254	10.39
Natural and Life sciences	14,942	3.96
Interdisciplinary sciences	15,364	4.07
Total Sciences	69,560	18.42
Sports	7,143	1.89
Total Sports	7,143	1.89
Subtotal General Fields	309,073	81.83
Health sector	51,721	13.69
University Institute of Technology Fields	16,925	4.48
Grand Total	377,719	100

Source: Ministry of Education, Higher Education and Research, data 2015-16

EDUCATION WITH A WORLDWIDE REPUTATION

Business schools & management training programs (2016)

Financial Times Rankings

- **Global MBA:**
 - INSEAD, world leader ahead of Harvard and London Business Schools. HEC Paris N° 15
- **European Business Schools:**
 - 2 schools in the European Top 3: HEC Paris and INSEAD
- **Masters in Management:**
 - 3 schools in the World Top 5: HEC Paris (2), Essec Business School (3), ESCP Europe (4)
- **Executive MBA:**
 - 4 MBA programs in the World Top 12: Tsinghua University/INSEAD (2), HEC/LSE/ NYU (3), INSEAD (4), ESCP Europe (12)

Universities (2016)

- **Times Higher Education World University Ranking:**
 - 4 higher education institutions in the Top 200: Ecole Normale Supérieure, Ecole Polytechnique, Pierre and Marie Curie University, Paris-Sud University
- **ARWU World University Ranking:**
 - 5 higher education institutions in the Top 100: Pierre and Marie Curie University, Paris-Sud University, Ecole Normale Supérieure, Ecole Polytechnique, Paris Diderot University

Specialized schools (2016)

- Gobelins, best animation school worldwide
- Ecole 42, best coding school worldwide



Mathematics: 2 universities in the top 10 ARWU (2015): Pierre and Marie Curie University, Paris Sud University

Physics: 2 universities in the top 30 ARWU (2015): Paris Sud University, Pierre and Marie Curie University



Futur en Seine 2016 © Dan Taylor - © Fotolia / Zsolt Bota Finna -
ESIEE Engineering © CCI Paris Ile-de-France / L. Bonvillain / R. Roux - © Fotolia / Capifrutta



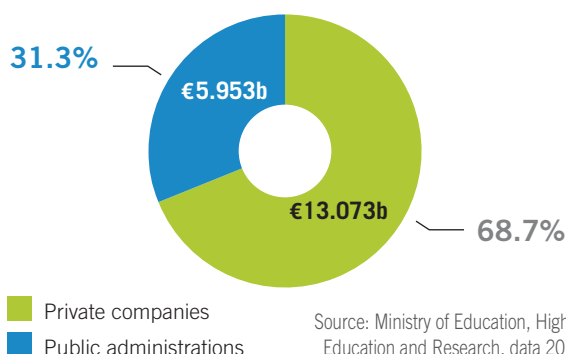
**156,000 people
involved in research**
(including 106,600 researchers)



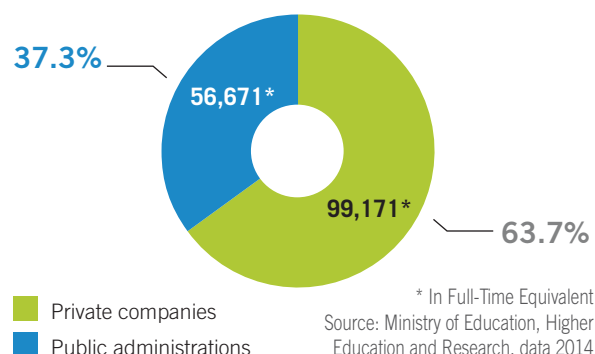
PARIS REGION LEADING EUROPE IN R&D (2014)



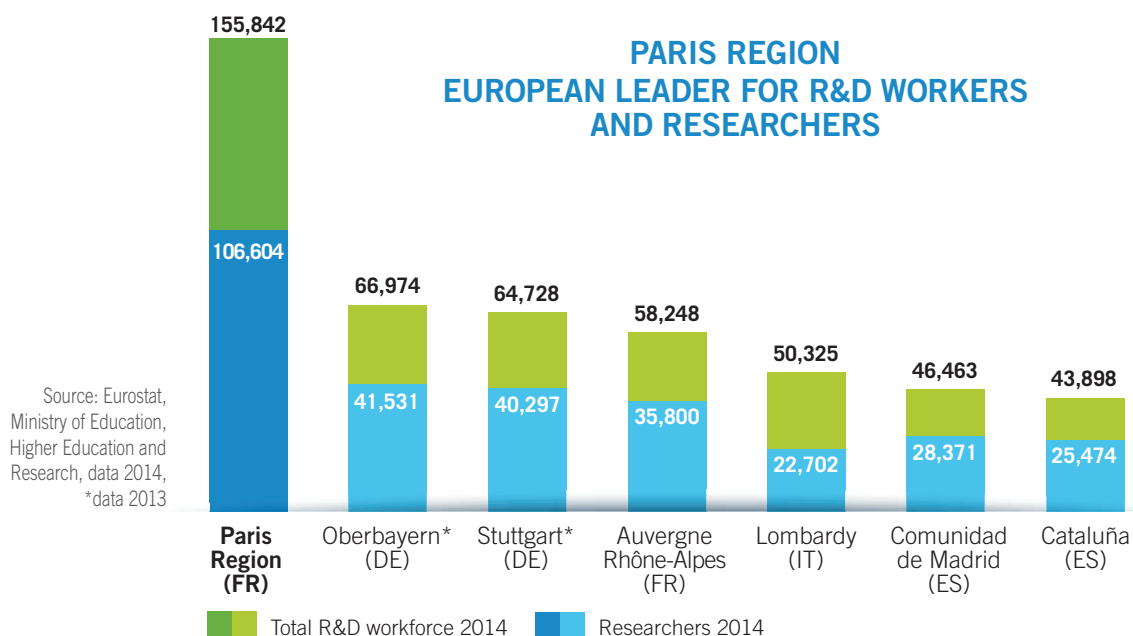
**PARIS REGION
R&D EXPENDITURE: €19.026b**
6.6% of European Union - 39.7% of France



**PARIS REGION
R&D WORKFORCE*: 155,842**
5.6% of European Union - 37.3% of France



PARIS REGION EUROPEAN LEADER FOR R&D WORKERS AND RESEARCHERS





THE PARIS REGION'S EXCELLENCE IS INTERNATIONALLY RENOWNED

31 Nobel Prizes

Ecole Normale Supérieure, top Nobel-producing undergraduate institution in the world

11 Fields Medals

29,400 enrolled in doctoral programs, **38%** in France (MENESR, data 2013)

5,111 foreign researchers in Paris Region, i.e.

53.2% of foreign researchers in France (FNAK, data 2015)

18,300 scientific publications, **35.4%** in France (OST, 2016, data 2013)

7,421 patents filed (INPI, data 2015)

N° 3 worldwide in volume of scientific publications behind Beijing and Tokyo (Elsevier/scopus)

European leader of the world's scientific publications in all disciplines and in mathematics, engineering sciences, universe sciences, physics, chemistry, fundamental biology

7.1% of the EU28's and **3.8%** of the world's scientific publications in mathematics (OST, data 2013)

N° 2 in Europe of the world's scientific publications in medical research, applied biology-ecology, human sciences, social sciences (OST, data 2013)

European leader for European patent applications by the inventor - all fields in 2012: **2,940**

34% of European patents are in France (OST, 2015, data 2012)



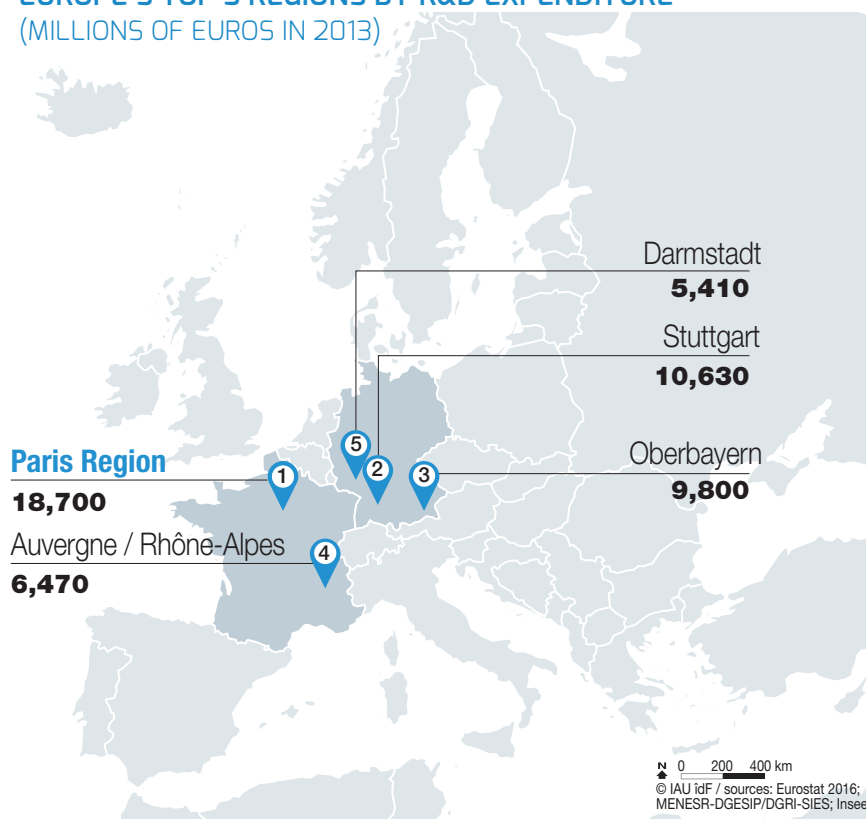
Futur en Seine 2016 © Beto-Ruiz-Alonso

THE N° 1 EUROPEAN REGION FOR RESEARCH & DEVELOPMENT EXPENDITURE



Genopole Campus Evry (91)
© PRE - Tendances floues / Denis Bourges

EUROPE'S TOP 5 REGIONS BY R&D EXPENDITURE (MILLIONS OF EUROS IN 2013)





PARIS REGION, THE PLACE TO FOSTER INNOVATION

9 competitiveness clusters bring together businesses, laboratories, research centers and higher education institutions to focus on applied research and to develop synergies and stimulate the emergence of technology transfers, and collaborative and innovative projects.

Over 4,000 members including: **3,400** companies and **420** labs and teaching institutions, ...
2,200 projects
€7.8b of total funding



Perfumery and cosmetics
465 members, incl. 42 major groups, 406 SME's, 17 labs and teaching institutions
200 projects funded since the cluster was founded
Total funding:
280 million euros



Design, production and mastery of complex systems
830 members, incl. 140 major groups, 470 SME's, 140 labs and teaching institutions
550 projects funded since the cluster was founded
Total funding:
2,800 million euros



Transport and mobility
361 members, incl. 49 major groups, 226 SME's, 45 labs and teaching institutions
216 projects funded since the cluster was founded
Total funding:
1,051 million euros



Digital transformation
1,065 members, incl. 50 major groups, 920 SME's, 80 labs and teaching institutions
664 projects funded since the cluster was founded
Total funding:
1,500 million euros



Financial services
422 members, incl. 132 major groups, 267 SME's, 15 labs and teaching institutions
13 projects funded since the cluster was founded
Total funding:
16 million euros



Aeronautics, space and on-board systems
270 members, incl. 42 major groups, 158 SME's, 44 labs and teaching institutions
66 projects funded since the cluster was founded
Total funding:
293 million euros



Sustainable cities and urban ecotechnologies
260 members, incl. 10 major groups, 184 SME's, 31 labs and teaching institutions
172 projects funded since the cluster was founded
Total funding:
460 million euros

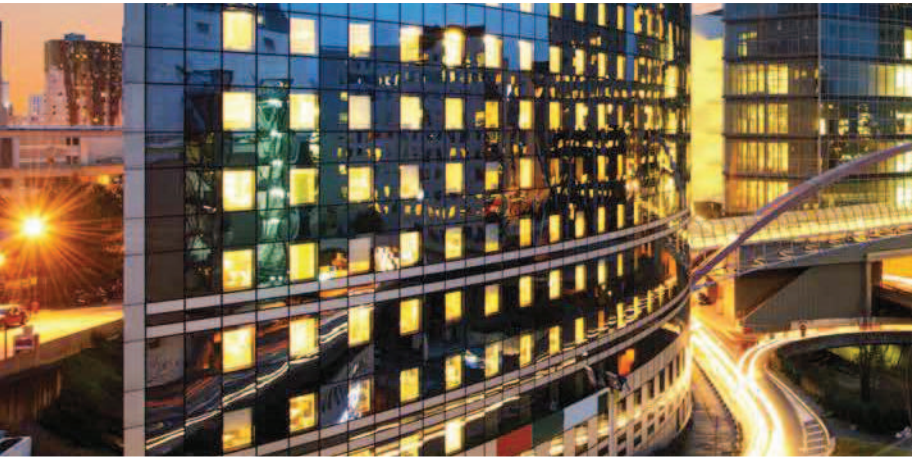


Rubber and polymer industry
129 members, incl. 11 major groups, 76 SME's, 25 labs and teaching institutions
71 projects funded since the cluster was founded
Total funding:
245 million euros



High-tech healthcare and new therapies
251 members, incl. 21 major groups, 195 SME's, 26 labs and teaching institutions
289 projects funded since the cluster was founded
Total funding:
1,190 million euros

Sources: Advancity, ASTech, Cap Digital, Cosmetic Valley, Elastopole, Finance Innovation, Medicen, Moveo, Systematic



Paris La Défense Business District © Fotolia



Europe's leading economic region

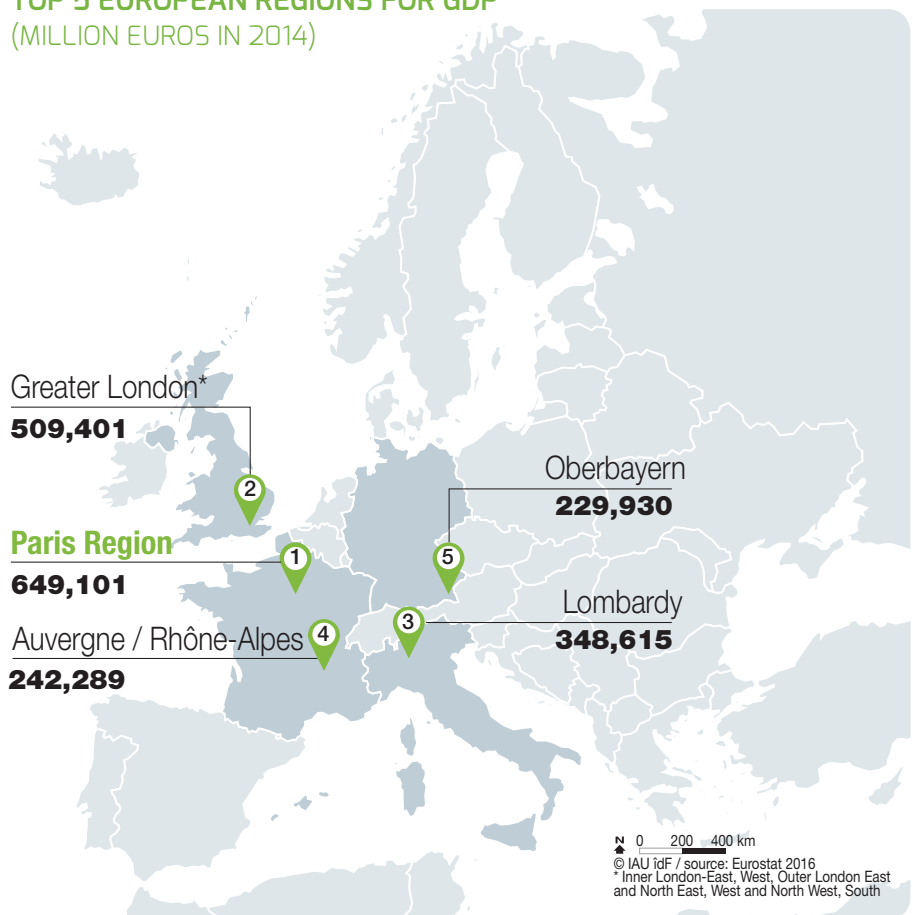


EUROPE'S TOP GROWTH DOMESTIC PRODUCT

The Paris Region's economic dynamism benefits from its position at the heart of the world economy. The Paris Region's GDP is equivalent to that of the Netherlands, and higher than that of Sweden, Poland, Belgium or Norway.

GDP: **€649 billion**
30.3% of France's GDP
4.6% of EU28 GDP
 GDP per capita: **€53,900**
 GDP per job: **€105,534**
 (INSEE, Eurostat, 2016, data 2014)

TOP 5 EUROPEAN REGIONS FOR GDP (MILLION EUROS IN 2014)



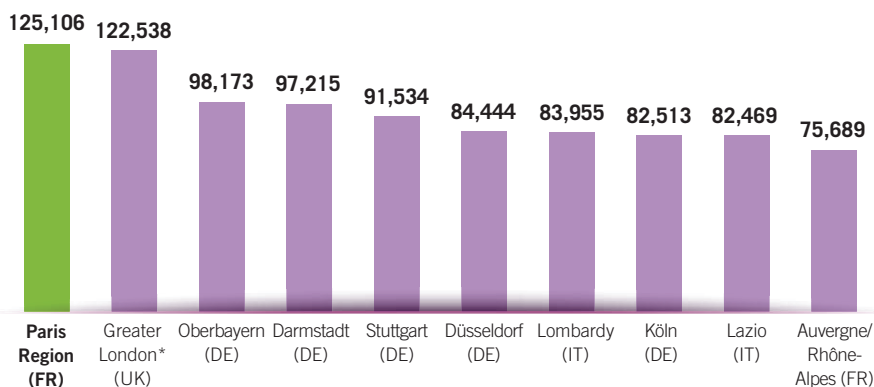
Louis Vuitton Foundation - Frank Gehry © Florence Humbert

A MAJOR BUSINESS HUB IN EUROPE

1,023,709 companies
(INSEE, 1.1.2015, Trading activities)
1,387,568 sites
(INSEE, 31.12.14, Total activities)
143,622 business creations
(INSEE, 2015)

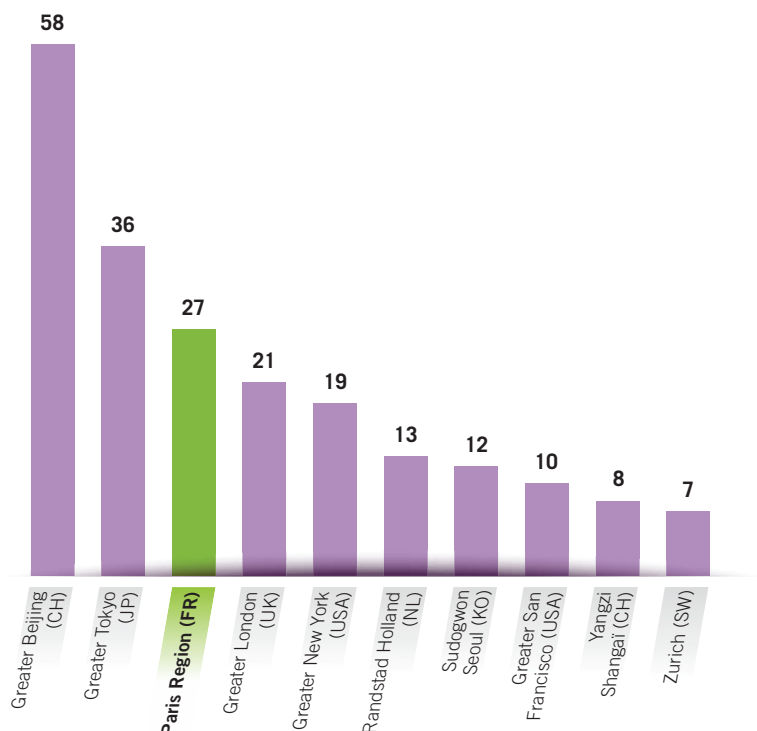
The primary strength of the Paris Region's economy is the concentration of jobs, corporate headquarters, SMEs/SMLs and business start-ups.
All of France's very large businesses (> 1,500 employees each) have a site in the region.
Paris Region is also the top French region in terms of hosting foreign groups and it accounts for over a quarter of all new business start-ups in France.

EUROPE'S LEADING REGION FOR LABOR PRODUCTIVITY



Labor Productivity
Source: Eurostat GDP in million euros divided by total number employed (2014),
Paris Region Entreprises estimates.
*Greater London= Inner + Outer London

PARIS REGION N° 1 IN EUROPE AND N° 3 WORLDWIDE FOR HOSTING THE WORLD'S TOP 500 CORPORATE HEADQUARTERS



Source: Fortune Magazine, Global 500, July 2016 - Ranking by metropolitan regions

TOP 10 CORPORATE HEADQUARTERS IN PARIS REGION - FORTUNE GLOBAL 500

	Revenues in € Millions	Total workforce
Total	134,581	96,019
AXA	121,283	98,279
BNP Paribas	104,657	181,551
Société Générale	101,095	151,149
Crédit Agricole	78,915	71,499
Carrefour	82,082	380,920
ENGIE	72,742	154,935
Électricité de France	78,074	156,312
PSA Peugeot Citroën	56,912	187,347
Groupe BPCE	52,744	102,886

Source: Fortune Magazine, Global 500, July 2016 -
Exchange rate used: \$1 = €0.938367



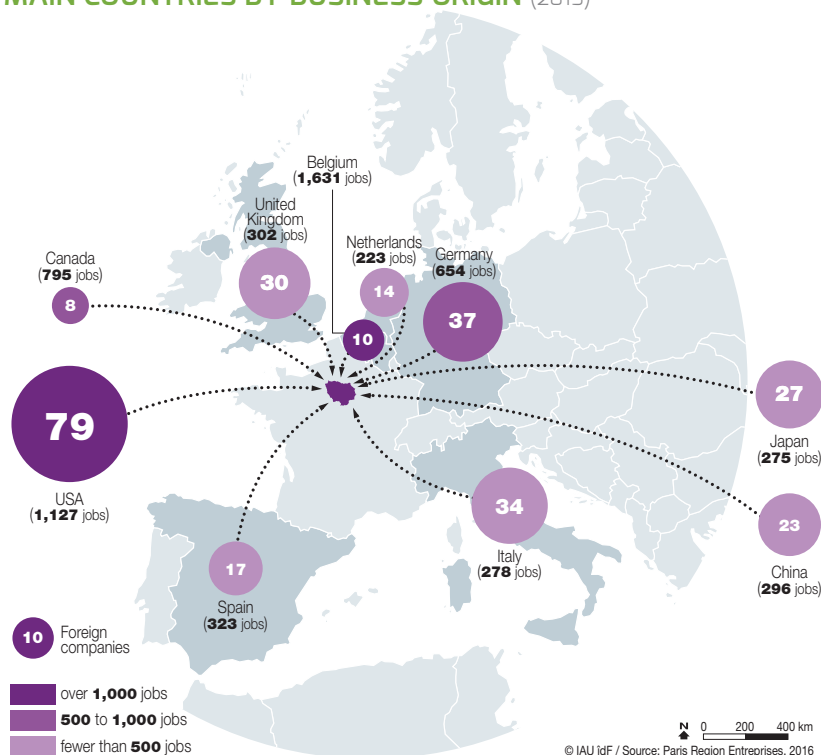
EUROPE'S N° 2 REGION FOR THE ESTABLISHMENT OF MAJOR FOREIGN GROUPS

13,000 foreign companies
27% of all foreign companies established in France
600,000 jobs

IN 2015 (Paris Region Entreprises)

- 340** foreign companies coming from **33** countries and creating **9,579** jobs, including:
- **185** coming from Europe (57%), **4,091** jobs
 - **87** coming from America (26%), **1,922** jobs
 - **61** coming from Asia (18%), **648** jobs
 - **7** coming from the Middle East (2%), **521** jobs

FOREIGN DIRECT INVESTMENTS IN PARIS REGION: MAIN COUNTRIES BY BUSINESS ORIGIN (2015)



TOP MAJOR PARIS REGION COMPANIES DEPENDENT ON FOREIGN GROUPS (BASED ON SALARIED WORKFORCE)

Country	Company	Salaried workforce
Netherlands	RANDSTAD	63,569
Denmark	ISS PROPRETE	21,181
Belgium	CORA	18,071
Netherlands	RANDSTAD INHOUSE SERVICE	17,570
USA	EURO DISNEY ASSOCIES	14,610
Sweden	SECURITAS FRANCE	13,120
Canada	CGI FRANCE	9,480
Germany	METRO CASH & CARRY FRANCE	9,169
Sweden	MEUBLES IKEA FRANCE	9,014
England	BRICO DEPOT	7,543
USA	CIE IBM France	7,270
Sweden	H&M	6,556



BNP Paribas © Vincent Gollain

Source: Diane, 2016



PARIS REGION AT THE CENTER OF GOODS AND SERVICES TRADE FLOWS (2015)

Paris Region is at the center of world trade flows: its main trading partners are **Europe** (exports: 57.2%, imports: 59.8%), **America** (exports: 16.5%, imports: 10.3%) and **Asia** (exports: 13.3%, imports: 23.9%).

Imports: €136.7b

26.9% of France's imports

Main regional imports

Automotive manufacturing products

12%, €16.7b

Natural hydrocarbons

8%, €11.2b

Telephones and communication equipment 6%, €8.1b

Exports: €83.2b

18.7% of France's exports

Main regional exports

Space and aeronautics manufacturing products 12%, €9.8b

Automotive manufacturing products

10%, €8.7b

Pharmaceutical products 7%, €6.1b

(French Customs, 2015)



Flins Assembly line - Installation of an Airbus reactor © CCI Versailles-Yvelines

PARIS REGION'S LEADING BUSINESS PARTNERS (2015)

Main suppliers			Main customers		
Imports			Exports		
Country	Value (€ billion)	%	Country	Value (€ billion)	%
China	19.2	14.05	Germany	8.6	10.34
Germany	16.3	11.92	United States	9.8	11.78
Belgium	13.6	9.95	Italy	5.4	6.49
United States	11.5	8.41	United Kingdom	5.8	6.97
Italy	8.6	6.29	Spain	5	6.01
Spain	8.4	6.14	Belgium	5.3	6.37
United Kingdom	6.2	4.54	Switzerland	4.6	5.53
Netherlands	5.3	3.88	China	2.9	3.49
Switzerland	5.1	3.73	Netherlands	2.3	2.76
Japan	3.2	2.34	Hong Kong	1.8	2.16
Total Paris Region	136.7		Total Paris Region	83.2	

Source: French Customs, 2015

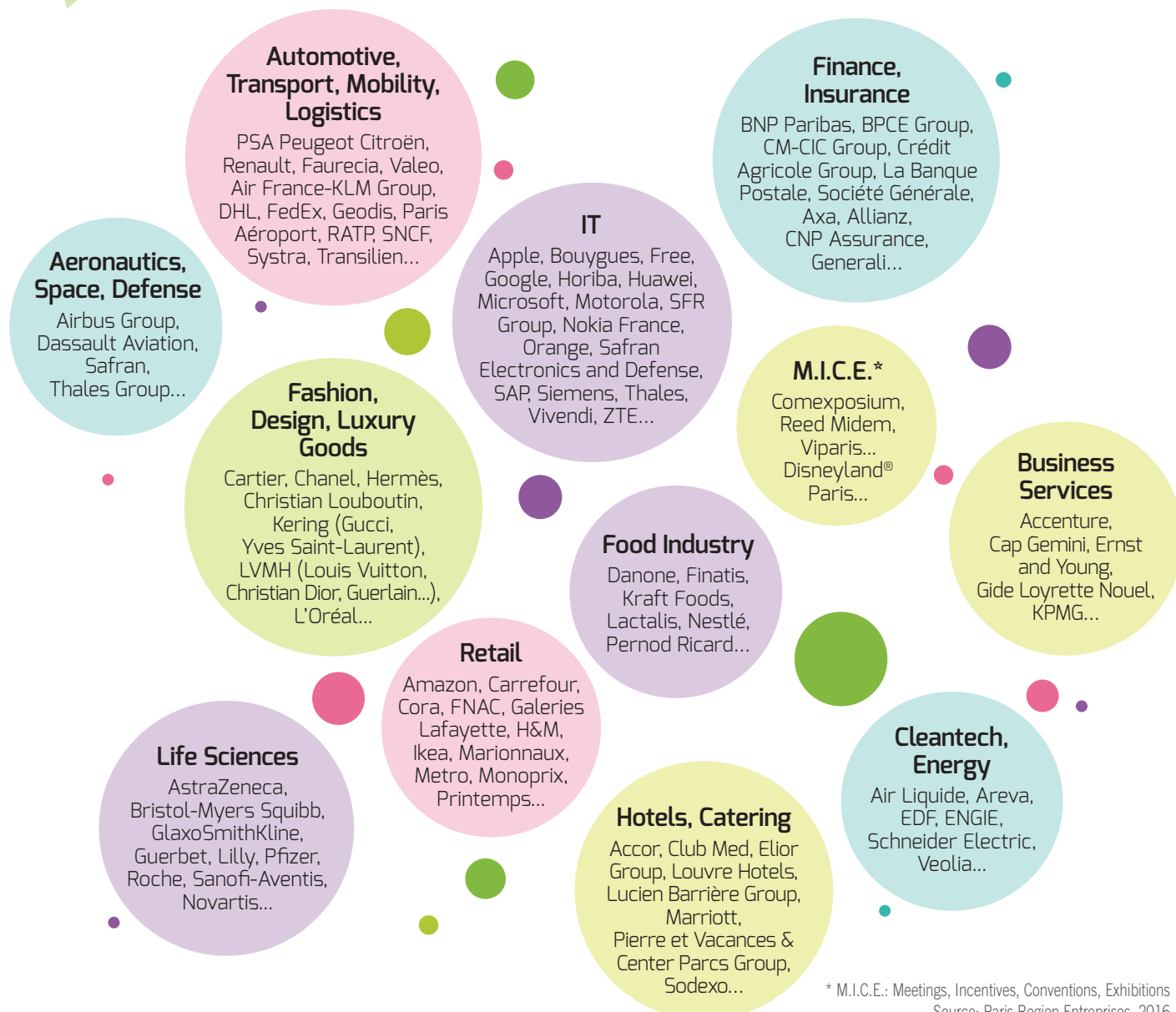


A multi-specialized region

© CRT / N. Baetens - © Fotolia / Buchachon - © AF / Virginie Valdois - © JNT Visual / Fotolia



KEY SECTORS IN PARIS REGION



* M.I.C.E.: Meetings, Incentives, Conventions, Exhibitions
Source: Paris Region Entreprises, 2016



© Digitalvision

→ **Europe's largest employment pool**

▶ THE EUROPEAN EPICENTER OF HUMAN CAPITAL

6.2 million jobs, **23.1%** of all jobs in France, **35%** of French executives (INSEE, 2016)

Unemployment rate: **9.6%** (EUROSTAT 2015)

Average gross annual salary: **€44,367** (INSEE, 11/16, data 2012)

THE PARIS REGION'S POPULATION BY PROFESSIONAL CATEGORY

Managerial and professional occupations	1,639,433	27.0%
Administrative white collar workers	1,626,762	26.8%
Semi-professional workers	1,563,475	25.7%
Manual labor and factory workers	868,489	14.3%
Craftspeople, retailers, business directors	281,211	4.6%
Farmers	5,484	0.1%
Others	87,576	1.4%
Total active population 15-64 years old	6,072,430	100%

Source: Insee 9/16, data 2013 - Total population 15-64 years



Engine maintenance © Air France Industries / Patrick Delapierre

▶ CHARACTERISTICS OF THE WORKING POPULATION IN PARIS REGION

Age 25-39
39 %



Women
49 %



University graduates
39 %



Executives
27 %



Foreign population
13 %



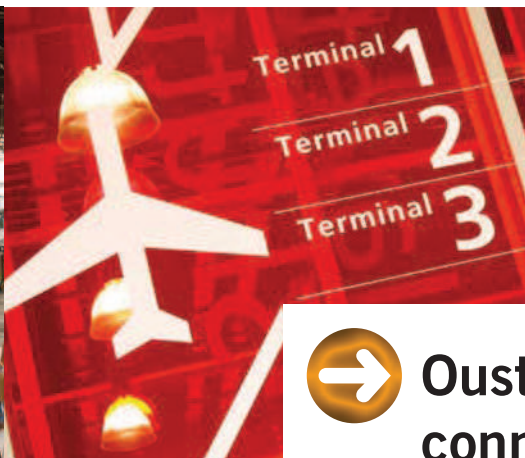
© IAU idF 2017 / source: Insee, data 2013



BREAKDOWN BY SECTOR OF BUSINESS SITES AND JOBS IN PARIS REGION IN 2014

Business sector	Sites	Jobs
Trade of automotive vehicles and motorcycles	203,898	699,872
Public administration	6,792	508,670
Administrative services and support activities	113,879	411,079
Education	51,710	403,931
Legal, accounting, management, architecture, engineering, technical testing and analysis	212,700	374,546
Transportation and storage	49,135	363,569
Financial and insurance activities	54,732	327,673
Accommodation and food	57,107	288,049
Construction	119,288	278,982
Activities for human health	80,888	276,364
Supporting housing and social work	11,877	218,070
Computer and information services	49,277	197,832
Other service activities	62,644	127,206
Publishing, audiovisual and broadcasting	30,575	125,859
Arts, entertainment and recreation	84,602	101,370
Other professional, scientific and technical	54,419	85,365
Real estate activities	84,283	76,145
Manufacturing of transport equipment	469	74,463
Scientific research and development	3,203	60,737
Manufacturing of food products, beverages and tobacco products	7,461	50,130
Electricity, gas, steam and air conditioning supply	3,354	46,331
Telecommunications	2,568	43,957
Manufacturing of computer, electronic and optical products	1,006	43,941
Other manufacturing; repair and installation of machinery and equipment	10,641	42,714
Production and distribution of water; sewerage, waste management and remediation activities	2,267	39,031
Metallurgy and metal products manufacturing, except machinery and equipment	2,537	27,567
Chemical industry	782	25,172
Manufacturing of rubber and plastic products and other non-metallic mineral products	1,662	18,524
Pharmaceutical industry	202	18,298
Manufacturing of textiles; clothing industry, leather and footwear industries	6,657	18,056
Woodworking, paper and printing industries	7,309	17,188
Manufacturing of machinery and equipment	960	16,768
Manufacturing of electrical equipment	650	13,706
Agriculture, forestry and fishing	7,442	5,106
Extra-territorial organizations	268	3,918
Mining and quarrying	298	1,751
Coking and refining	26	1,642
Total	1,387,568	5,433,582

Number of active establishments and salaried positions as of 31/12/2014 by business sector (A38)
©Insee 12/16 - Sources : Connaissance Locale de l'Appareil Productif (CLAP)



Oustanding transport connections

Paris North station © Paris Tourist Office / Jacques Lebar -
Signage Shuttle © Air France / Guillaume Grandin - Tramway ligne T3 © RATP / Eric Touzé



PARIS REGION, GATEWAY TO EUROPE AND THE WORLD

Reach 510 million consumers within 2 hours by plane

Paris Region has major infrastructures to ensure the seamless flow of people, goods, capital and data.

By plane (Paris Aéroport, 2016)

3 international airports

97.2 million passengers &

709,403 flights

Paris-Charles de Gaulle

N° 2 in Europe for passenger traffic

65.9 million passengers

472,950 flights

Paris-Orly

31.3 million passengers

234,453 flights

Paris-Le Bourget

Europe's leading business airport

53,500 flights

10 airfields and 1 heliport

By train (SNCF, 2015 and STIF)

10 main stations, including **7** TGV
(high-speed train) stations

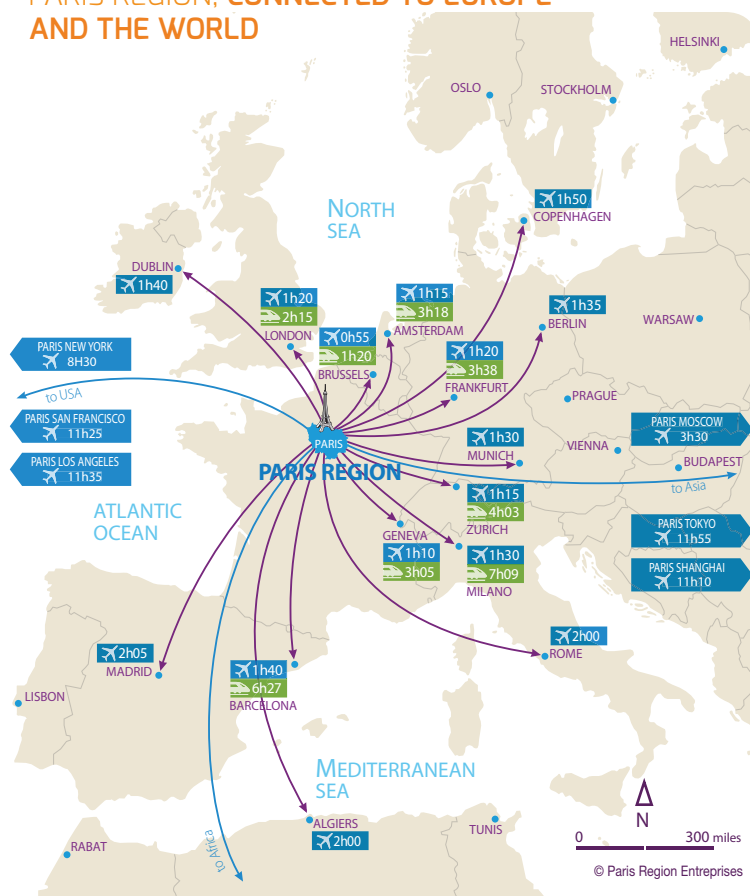
1 million passengers on **3,550** trains
per day on the Paris Region railway
network

5 railway stations have traffic that
exceeds **100,000** travellers daily

19 million TGV passengers travelling
from Paris to main European destinations

1,800 km of railway tracks

PARIS REGION, CONNECTED TO EUROPE AND THE WORLD





ONE OF THE BEST AND LARGEST PUBLIC TRANSPORT SYSTEMS IN THE WORLD

Shared transport

Velib (JC Decaux/Velib 9/16, data 2015)

The world's largest self-service bike system

23,600 bikes

1,751 stations within Paris and **30** municipalities bordering the capital

300,000 current subscribers

298 million Velib rentals since 2007

108,000 uses per day on average

75 Velib rented every minute

3,500 km of bike lanes

Autolib (2016)

3,700 car-sharing vehicles in service

1,042 Autolib stations

171,000 subscribers

5.2 million rentals in 2015, ie.

100,000 Autolib rentals per week

100 municipalities

Public transport (SNCF TRANSILIEN 2016)

70% of passengers on 10% of the national rail network

1,280 km of network

6,200 trains per day

At rush hour, more than **650** trains simultaneously

3.7 million passengers per working day

14 lines

385 regional stations (« Transiliennes »)

4.5 BILLION TRIPS BY PUBLIC TRANSPORT IN PARIS REGION IN 2015

Mode of traffic	Lines	Millions of trips
Underground / Subway	14	1,520
Train - RER* (SNCF - RATP)	13	1,393
Tramways	8	0,267
Bus (including night buses)	1,445	1,367
Total	1,480	4,547

Source: Stif according to SNCF, RATP, Optile - * High-speed metro

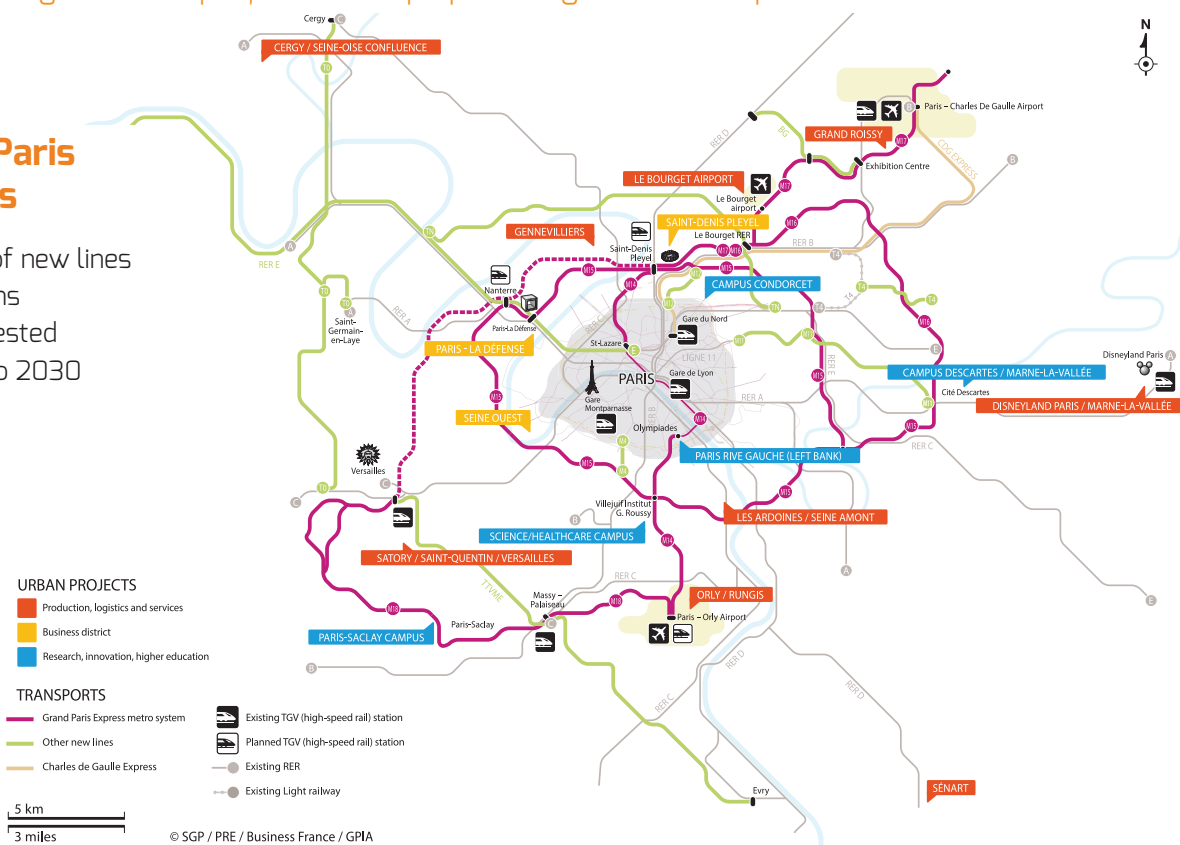
STILL LOOKING AHEAD WITH THE GRAND PARIS PROJECT, the largest urban project in Europe providing a new transport network

Grand Paris Express

200 km of new lines

68 stations

€28b invested through to 2030





Gennevilliers platform © Port Autonome de Paris - Barge © Fotolia / Coco - Containers and transport trucks © Fotolia / Soleg



Exceptional logistics infrastructure



SIGNIFICANT CAPACITY IN LOGISTICS REAL ESTATE

Warehouses > 5,000 m²



Sources: BNP Paribas Real Estate, ORIE



A HIGHLY COMPETITIVE LOGISTICS HUB

Net prime rents in Q2 2016 per year
Warehouses over 5,000 m² (in €)

London (United Kingdom)	219
Helsinki (Finland)	109
Stockholm (Sweden)	94
Birmingham (United Kingdom)	89
Munich (Germany)	81
Frankfurt (Germany)	76
Hamburg (Germany)	68
Madrid (Spain)	66
Amsterdam - Rotterdam (Netherlands)	60
Koln (Germany)	60
Warsaw (Poland)	60
Berlin (Germany)	59
Paris Region (France)	55

Source: European Logistics Market, Property Report, H12016 (data Q2 2016) - Panel of regions - BNP Paribas Real Estate

Road, waterway and railway logistics

N° 1 road network in Europe

12,000 km of roads, including **497 km** of national roads and **613 km** of highways

French N° 1 river port and the **N° 2** across Europe

70 urban ports

500 km of navigable waterways

1,000 ha of port areas

1 million m² of warehouse space

6 multimodal platforms

6 container terminals

Railway freight relies on **111** freight stations and **640** facilities connected to them

(Setra 2014, Haropa, 2016)

Freight

Air: **2.2** million metric tons of goods
(Paris Aéroport 2015)

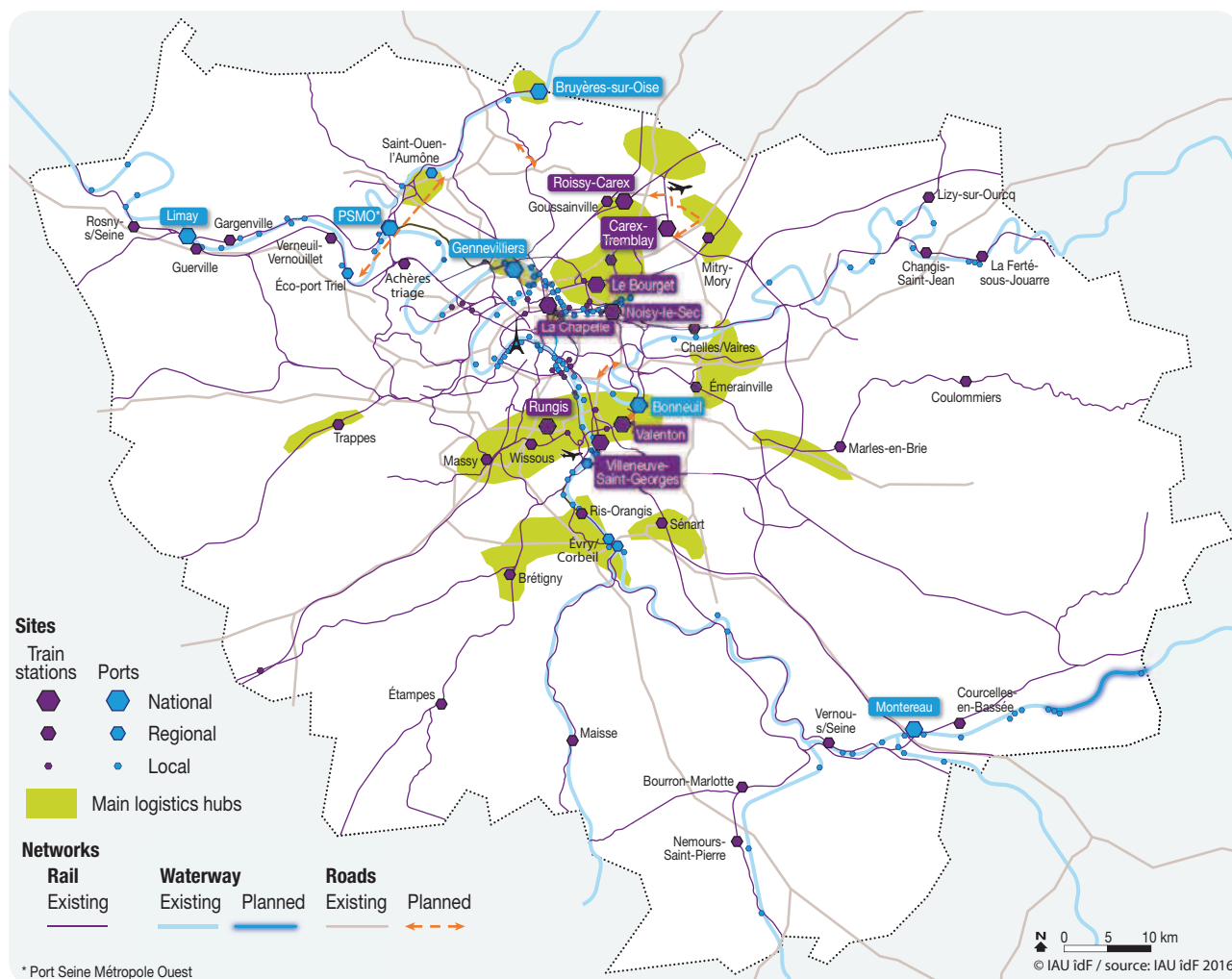
Rail: **10 million** metric tons of goods (IAU)

Waterway: **20 million** metric tons of goods
(Haropa, 2016)

Road: **193 million** metric tons of goods
(SOes, TRM survey, 2014)



INFRASTRUCTURE AND LOGISTICS SITES IN PARIS REGION



THE 6 MULTIMODAL PLATFORMS MANAGED BY HAROPA-PORTS DE PARIS PROVIDE EXTENSIVE CONNECTIONS TO TRANSPORT INFRASTRUCTURES

Multimodal platform	Waterway & Maritime	Railway	Road	Public transport	Oil Pipeline	Traffic (million metric tons)
Gennevilliers	x	x	x	x	x	3.67
Limay-Porcheville	x	x	x	x		1.17
Bonneuil-sur-Marne	x	x	x	x		1.04
Montereau-Fault-Yonne	x	x	x			0.49
Evry	x	x	x			0.36
Bruyère-sur-Oise	x	x	x			0.30

Sources: Haropa - Port de Paris, 2016, data 2015



Offices in Pantin. Ourcq waterway. © Benh LIEU SONG



Europe's largest inventory of business real estate



OFFICE SPACE (ORIE and BNP PARIBAS REAL ESTATE, 2016)

Surface area	52.8 million m² (ORIE)
Take up	2.4 million m²
Available now	3.5 million m²
Vacancy rate	6.7%
Space under construction	1.1 million m²



BUSINESS PREMISES (CBRE Q4 2016)

Surface area	30 million m²
Take up	900,000 m²
Available now	2.6 million m²



HOUSING (INSEE, data 2013)

5.6 million housing units
• 71.6% flats (3.9 million)
• 26.7% houses (1.5 million)

PRIVATE HOUSING RENTS IN PARIS REGION

	Paris	Inner suburbs	Outer suburbs	Paris Region
Rent in €/m ²	22.7	16.2	13.65	17.4
Average monthly rent in €	1,128	840,7	800,5	933

Source : OLAP, 2016

TOP 10 OFFICE SPACE MARKETS BY OCCUPANCY COSTS (2014)

Rank 2014	Country	City	District	Occupation costs (a/m ² /year)
1	United Kingdom	London	West End	2,344
2	China	Hong Kong	Central Business District	1,636
3	USA	New York	Midtown	1,162
4	Brazil	Rio de Janeiro	Zona Sul	1,150
5	India	New Delhi	Connaught Place	1,064
6	Russia	Moscow	Central Business District	1,055
7	Japan	Tokyo	Central Business District	1,051
8	China	Beijing	Central Business District	926
9	Australia	Sydney	Central Business District	878
10	France	Paris	Central Business District	860

Source: Office Space Across the World 2015, Cushman and Wakefield



A MULTITUDE OF WORK SPACES

Around **1,500** business activity areas
172 «third places»:

- **115** coworking spaces
- **14** makerspace
- **47** shared offices
- **12** hackerspace
- **44** fablabs
- **8** telecenters

(IAU Ile-de-France, 10/16, TechOnMap, La Fonderie, 1/17)



Station F © Wilmotte & Associes

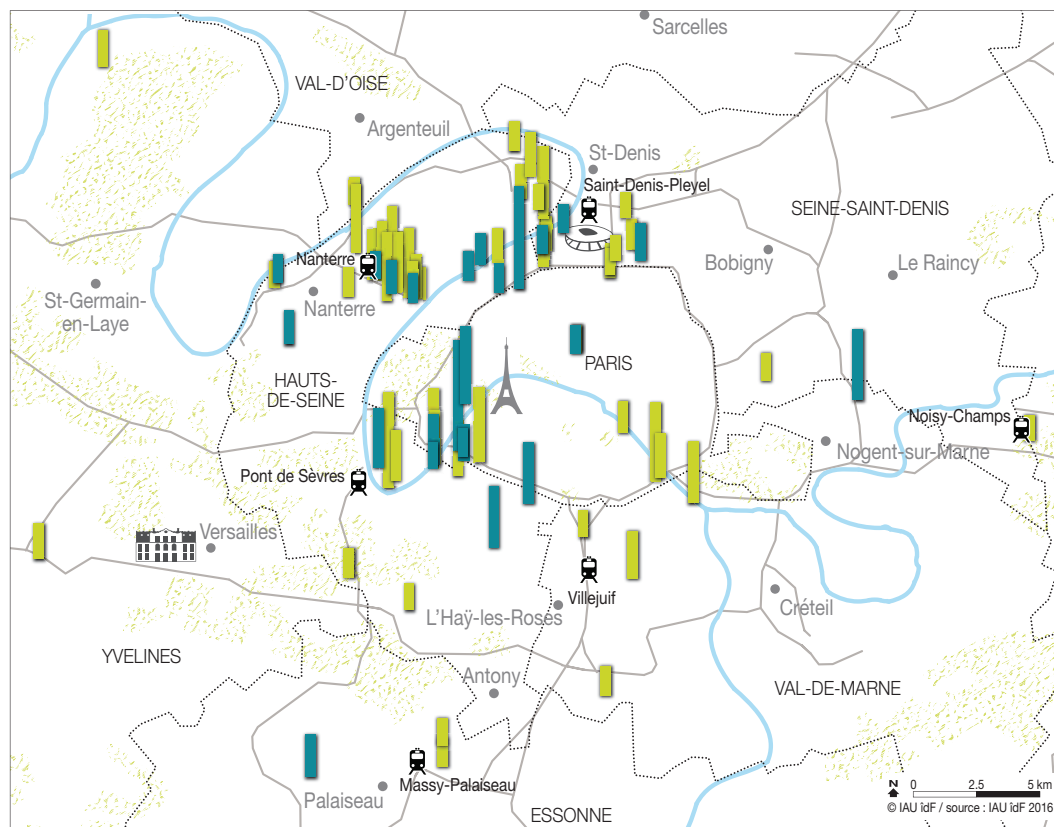
PARIS REGION, THE WORLD CAPITAL OF BUSINESS INCUBATORS

110 incubators and accelerators, with **25** under expansion or in development (APUR, 2016)

Over **130,000** square meters of space for start-up incubators has been created in recent years.

By 2020, an additional **100,000 m²** will be made available, including **34,000 m²** at Station F, opening in 2017, the largest incubator in the world hosting **1,000** start-ups, with some **3,000** desks.

MAIN OFFICE SPACE PROJECTS BY 2020 IN PARIS REGION WITH SURFACE AREAS OF OVER 30,000 M²





© Viparis / J.C. Guilloux



**Europe's top
region for
hosting events**



AN OUTSTANDING WORLD-CLASS DESTINATION FOR ORGANIZING TRADESHOWS (CCI PARIS ÎLE-DE-FRANCE, data 2015)

Exhibition surface area: **700,000 m²**

The largest amount of exhibition space in Europe

21 exhibition and conference venues

399 tradeshows, including **213** professional tradeshows

96,600 exhibiting companies, including **25,900** foreign companies (**27%**)

8.3 million visitors, including **603,600** foreigners (**7.3%**)

€4.1b in economic benefits

63,100 jobs generated by tradeshows

€19.3b turnover by exhibiting companies at tradeshows, of which **€8.1b** realized with foreign customers

6.4 million contracts concluded at trade fairs

TOP 10 INTERNATIONAL TRADESHOWS HELD IN PARIS REGION (BY NUMBERS OF VISITORS AND EXHIBITING COMPANIES)

Tradeshow Name	Business sector	Visitors (1st visit)	Exhibiting companies	Year
Mondial de l'Automobile / Paris Motor Show	Transport, logistics, traffic and related equipment	1,253,513	240	2014
Salon International de l'Agriculture / Paris International Agricultural Show	Agriculture, horticulture, livestock farming, floristry, fishing and related equipment	541,077	973	2016
Foire internationale de Paris	Multi-sector tradeshows and trade fairs	467,252	2,136	2016
Salon international de l'Aéronautique et de l'Espace / International Paris Air Show	Defense, civil and military security	350,648	2,309	2015
Salon Nautique International de Paris / Paris Boat Show	Tourism, sports and leisure activities	201,823	690	2015
Paris Games Week	Tourism, sports and leisure activities	195,766	154	2015
Maison&Objet	Habitat, home improvement, office, decoration, gifts and crafts	161,695	5,602	2015
SIMA, Mondial des Fournisseurs de l'Agriculture et de l'Elevage	Agriculture, horticulture, animal husbandry, floristry, fishing and related equipment	143,526	894	2015
Salon du livre de Paris / Paris Book Fair	Art, culture, music and shows	109,432	956	2016
Première Vision Pluriel (Première Vision, Expofil, Indigo, Mondamont, Cuir à Paris, Zoom by Fatex)	Textiles, clothing, shoes, leather goods, jeweler and fashion accessories	97,660	3,717	2015

Source: UNIMEV, OJS



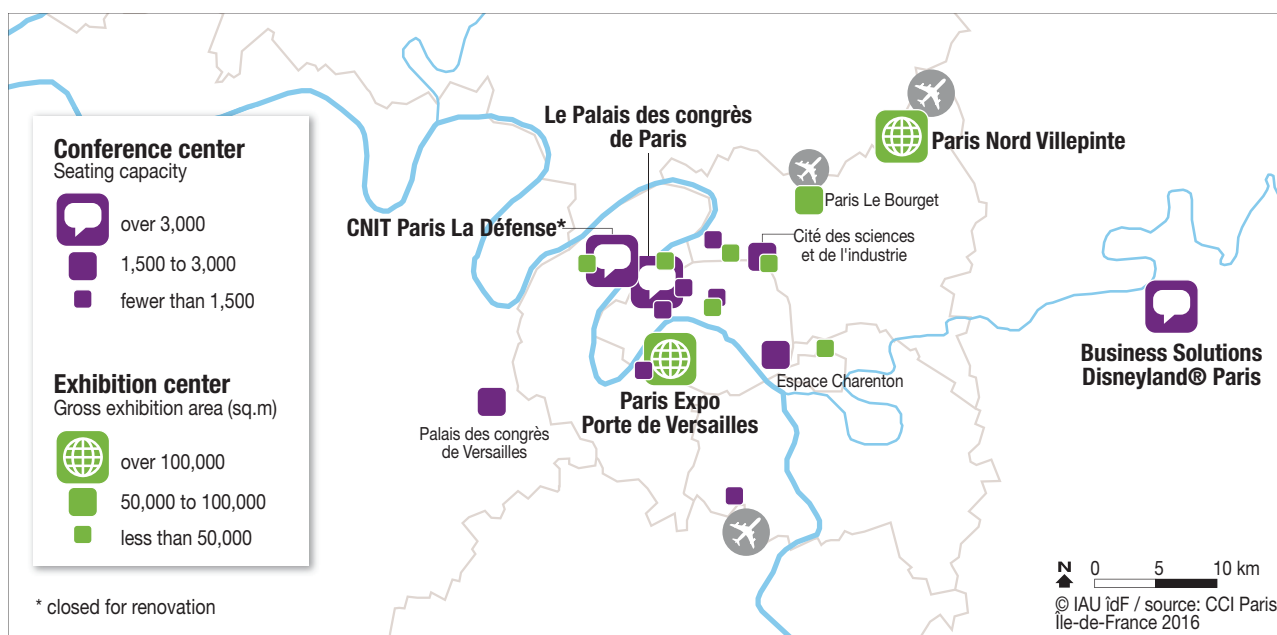
2017

International Paris Air Show

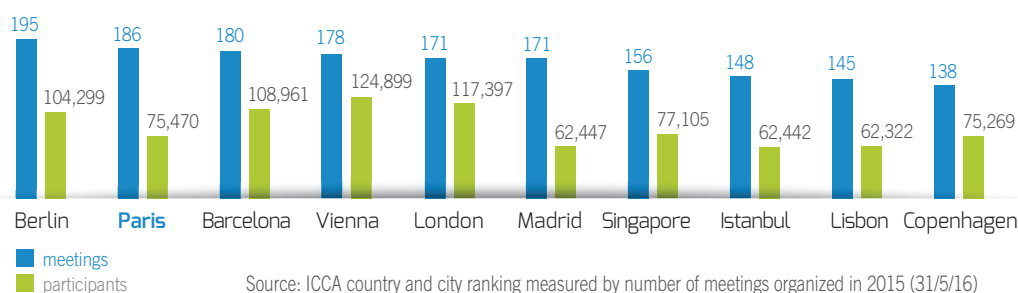
June 19th to 25th, 2017 at Paris Le Bourget

Batimat: the International building exhibitions,
November 6th to 10th, 2017 at Paris Nord Villepinte

CONFERENCE AND EXHIBITION CENTERS IN PARIS REGION (2016)



PARIS N°2 CITY WORLDWIDE FOR HOSTING BUSINESS MEETINGS



Source: ICCA country and city ranking measured by number of meetings organized in 2015 (31/5/16)

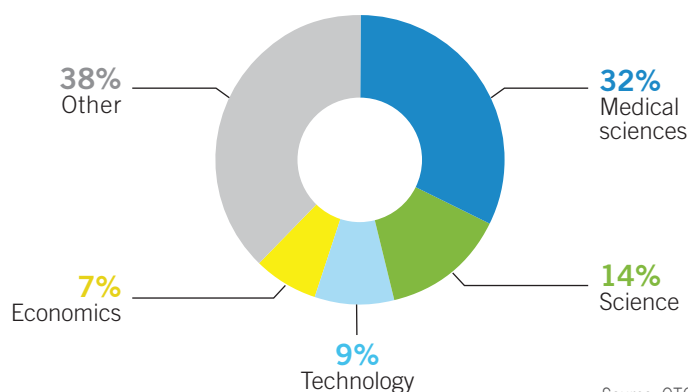


OVER 1,000 CONVENTIONS PER YEAR IN PARIS REGION

(OTCP, 2015)

1,004 conventions
761,400 participants
32% were foreign visitors (**244,600**)
€1.2b in economic benefits
20,200 jobs created by conventions

BREAKDOWN OF CONVENTIONS BY BUSINESS SECTOR IN PARIS REGION (2015)



Source: OTCP



Floating gardens © Paris Tourist Office / Marc Bertrand



The world's leading tourist destination



WORLD'S TOP TOURIST DESTINATION

46.7 million tourists, including **19.4 million** foreigners (**41.5%**)

172.6 million night stays, half the total night stays in France, including **86.3 million** for international tourists (**50%**)

€21b in economic benefits,
93,000 businesses, **524,000** jobs
(CRT Paris Île-de-France, 2016, data 2015)



N° 1 WORLDWIDE IN HOTEL CAPACITY

153,138 rooms

66.3 million hotel night stays, half the total night stays in France, including **15.6 million** for international tourists (**23.5%**)

2,431 hotels

• **885** 3-star hotels : **36.4%**

• **507** 4- or 5-star hotels : **20.6%**

10 luxury hotels

(INSEE, data as 01.01.16, CRT Paris Île-de-France, 2016, data 2015)

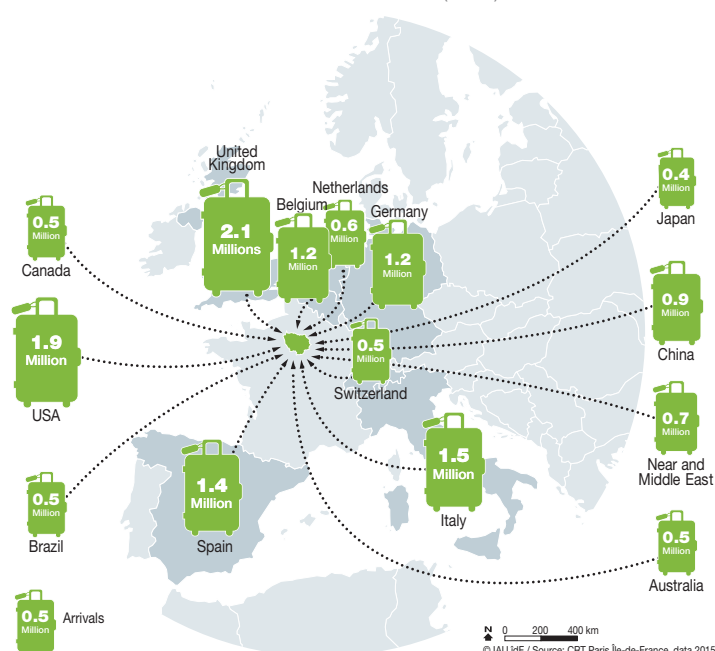
TOP MOST VISITED TOURIST SITES IN PARIS REGION

(MILLIONS OF VISITORS) (2015)

Disneyland® Paris	14.8
Notre-Dame de Paris*	13.6
Sacré Cœur de Montmartre*	10
Louvre Museum	8.4
Palace of Versailles	7.4
Eiffel Tower	6.9
Musée d'Orsay	3.4
Centre Pompidou	3
Cité des Sciences et de l'Industrie	2
Notre-Dame de la Médaille Miraculeuse Chapel*	2
Grand Palais	1.7
Arc de Triomphe	1.7
National Natural History Museum	1.6
Army Museum	1.4
Quai Branly Museum	1.3
Philharmonic of Paris	1.2
Montparnasse Tower	1
Louis Vuitton Foundation	1
Zoological Park of Paris	0.9
Sainte-Chapelle	0.9

* free admission, estimate - Source: CRT Paris Île-de-France, 2016, data 2015

PROVENANCE OF MAIN FOREIGN TOURISTS IN PARIS REGION (2015)





WORLD CENTER FOR CULTURE (2016)

4,000 historical monuments
140 museums, including **3** of the world's most visited museums: the Louvre, Musée d'Orsay, Centre Pompidou
307 cinemas, **1,076** screens
361 theatres
5 opera houses
47 foreign cultural institutes (FICEP)
64.1 million people visited the top **20** Parisian cultural sites in 2015
5 million visitors at the **10** largest exhibitions in Paris in 2015
 (INSEE, CRT Paris Île-de-France, 2016, data 2015)

4 UNESCO SITES (2016)

- Palace of Versailles
- Paris, the Banks of the River Seine
- Fontainebleau Château and Park
- Medieval City of Provins

TOP CULTURAL EVENTS IN PARIS REGION (BY NUMBER OF VISITORS) (2015)

European Heritage Days*	Over 12 million visitors nationwide
Techno Parade*	350,000
Solidays	180,000
Rock en Seine	120,000
Art Paris Air Fair	55,735

*free admission, estimate
 Source : Repères de l'activité touristique 2016, CRT Paris-Ile-de-France



Quai Branly Museum. Green wall realized by Patrick Blanc.
 © Musée du Quai Branly / L. Boegly. Architect J. Nouvel

GREAT DENSITY OF SPORTS-RELATED FACILITIES (2016)

19,000 sports clubs
2.4 million Paris Region inhabitants registered with a sports club
12 leisure resorts (**3,000** hectares)
5,500 tennis courts
420 swimming pools
420 equestrian centers
100 golf courses
67 high-level sports and training centers
1,276 top French athletes
 (MEOS, Clubs and sports licence : 2014-15, IRDS 2016)

SOME OF THE MOST POPULAR SPORTING EVENTS (2016)

UEFA EURO 2016 (soccer):
795,000 spectators
 Tour de France (cycling race):
545,000 spectators
 Paris Open, Roland-Garros (Tennis):
460,000 spectators
 Paris Marathon: **250,000** spectators
 Tournament of the Six Nations (rugby):
220,000 spectators
 Paris Bercy Master 1000 (tennis):
130,000 spectators
 Longines Paris Eiffel Jumping (equestrian):
120,000 spectators
 (IRDS, 2016)

Events 2017

- Handball World Championship, January 2017
- Ice Hockey World Championship, May 2017
- Wrestling World Championship, August 2017
- World Championship Open Water Skiing, September 2017

NATURE IS NEARBY

21% cityscape, **28%** woodland
50% agricultural land and **1%** water
4 regional nature parks representing **18%** of the land area (218,000 ha)
25 Natura 2000 sites

WORLD CAPITAL OF SHOPPING (2016)

218 shopping centers

19 major department stores: Galeries Lafayette, Printemps, Le Bon Marché, BHV...

(Panorama/tradedimensions, Le guide 2017 de la distribution, IAU idF)



Qwartz commercial center, Villeneuve-la-Garenne © Qwartz

2 PARIS REGION SHOPPING CENTERS ARE AMONG EUROPE'S TOP 10 CENTERS WITH OVER 20 MILLION VISITORS EVERY YEAR
(ANNUAL FOOTFALL, IN MILLION VISITORS 2015)

Westfield Stratford (London, United Kingdom)	45.5
Les Quatre Temps (La Défense, Paris Region, France)	44.1
Galeria Krakowska (Krakow, Poland)	35.0
Bullring (Birmingham, United Kingdom)	34.7
La Part-Dieu (Lyon, France)	34.3
Forum des Halles (Paris Region, France)	33.3
Westfield (London, United Kingdom)	27.3
Hoog Catharijne (Utrecht, Netherlands)	24.8
Shopping City Sud (Vienna, Austria)	24.6
La Vaguada (Madrid, Spain)	21.3

Source: Sites commerciaux n° 261, september 2016

GASTRONOMY EXPERIENCE (2016)

Rungis International Market, the world's leading fresh produce market

8.9 billion euros turnover, **18 million** consumers, **1,186** companies, **6,500,798** entries, **1,666,760** metric tons of food products

The largest organic market in Europe: **5,600 m²**.

"Saveurs Paris Île-de-France" is a regional food brand created to highlight close to **1,000** products and **70** kinds of fruit and vegetables: Brie from Meaux, beer from the Vexin, honey and saffron from the Gâtinais, asparagus from Argenteuil, Belle de Fontenay potatoes, etc.

5,000 farms

864 agri-food companies

11,000 jobs

16,683 restaurants, **118,000** jobs

107 Michelin-starred restaurants, including **40%** of France's 3-Michelin-star restaurants.

(Cervia, FAFIH, Guide Michelin, Rungis)



Ride in Paris © Paris Tourist Office / Amélie Dupont



Please do not hesitate to send us your comments and suggestions to improve this new edition: prkf@parisregionentreprises.org

We thank all the organizations and individuals from whom we have been able to retrieve the data used in producing this document: Advancity, APUR, ARWU, ASTech, Autolib, BNP Paribas Real Estate, Cap Digital, CBRE, Cervia, Paris Île-de-France CCI, Cosmetic Valley, CRT Paris Ile-de-France (Paris Region Tourist Board), Cushman & Wakefield, French Customs, Educsol, Elastopole, Eurostat, FAFIH, Ficep, Finance Innovation, Financial Times, Fortune Magazine, Haropa - Ports de Paris, IAU Île-de-France, ICCA, Grand Paris, Guide Michelin, INPI, INSEE, IRDS, La Fonderie, Medicen, Mov'eo, Ministry of Education, Higher Education and Research, OJS, OLAP, ORIE, OST, OTCP (Paris Convention and Visitors Bureau), Panorama/tradedimensions, Paris Aéroport, Paris Region Entreprises, ParisTech, QS Quacquarelli Symonds, Sites commerciaux, SNCF, STIF, Systematic, Times Higher Education, Transilien, Unesco, UNIMEV, Velib.

Editorial Board:

IAU Île-de-France: Vincent Gollain, Christine Tarquis

Paris Île-de-France Regional Chamber of Commerce and Industry: Yves Burfin, Isabelle Savelli

Paris Region Entreprises: Isaac Marcos Behmaras, Florence Humbert

Maps: Pascale Guéry, IAU-Île-de-France

Graphics: Agnès Simonpaoli

Translation: Tammy Sas-Mayaux

© Paris Île-de-France CCI - IAU-Île-de-France - Paris Region Entreprises
March 2017